

*Providing
Esthetic services, including:*

- VISIA COMPLEXION ANALYSIS
The VISIA system evaluates your skin for a number of skin conditions, including hyperpigmentation and photoaging, redness and rosacea and acne. We then formulate a skin care program specifically tailored for your individual needs and track your progress.
- SKIN CARE TREATMENT PLANNING
- CHEMICAL PEELS
- FACIALS
- MICRODERMABRASION

All treatments include home care product recommendations and a skin care plan.

AVÈNE®

A full line of skincare products created using Avène thermal spring water as the key ingredient, ideal for the treatment of sensitive skin, other skin conditions and post procedure. Discover Avène and find the solution to your skin concern.

ELTA MD®

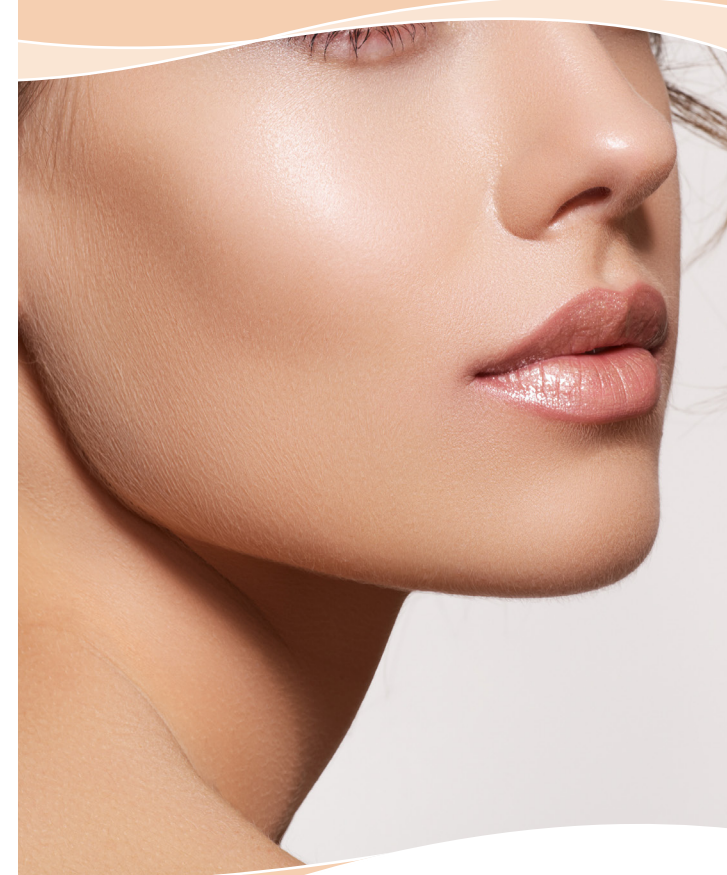
Features moisturizer and sun protection products that are purely natural and chemical-free; for sensitive and post-procedure skin, safe for all ages, to help protect and maintain skin health.

GLYTONE®

Created as the physician's only glycolic acid product line and provides the highest skin rejuvenation efficacy. Best when used in conjunction with peels for optimal results.

REVISION SKINCARE®

Features *Teamine Eye Complex*, the #1 eye treatment for dark circles; and *Nectifirm*, an advanced technology for firming the neck.



caring for the skin you're in!



Facials & Microdermabrasion

ALL our facials include cleansing with steam, exfoliation, extraction when indicated, a skin analysis mask and moisturizer with SPF, and customized to accommodate the following skin types:

SELECT FROM OUR CUSTOMIZED FACIAL OPTIONS

1 SESSION \$75 SERIES OF 4 \$255

FOR SUN DAMAGED OR AGING SKIN

This facial uses AHA-based products to minimize fine lines and remove dead cellular build up on the skin's surface, leaving your skin glowing and rejuvenated.

FOR ROSACEA PRONE OR SENSITIVE SKIN

This facial uses hypo-allergenic products to calm skin irritation and redness while providing deep cleansing and hydration.

FOR ACNE PRONE OR OILY SKIN

This facial uses antibacterial based products and a sulfur mask to deep clean pores and rid the skin of acne bacteria; geared toward all acne prone skin types and for all ages.

MINI FACIAL

Any one of our customized facials listed above, but designed for the busy schedule.

1 SESSION \$50 SERIES OF 4 \$170

TEEN FACIAL

Specially for teens 18 years and younger, includes an initial VISIA Complexion Analysis and mini facial as well as comprehensive guidance on skin care practices, including cleansing techniques, care at home, the use of make up and sunscreens.

1 SESSION \$40 SERIES OF 4 \$136

BACK "FACIAL"

Customized skin care treatment for your back; includes exfoliation, mask and extractions. Designed for all skin types.

1 SESSION \$60 SERIES OF 4 \$204

MICRODERMABRASION

Exfoliation of the top layer of dead skin cells on the face to address rough skin texture, hyperpigmentation, enlarged or clogged pores, warty growths and acne scarring.*

1 SESSION \$90 SERIES OF 4 \$306

**Ask about our special micrdermabrasion pricing for other target areas, such as the back, decollete, hands and arms, legs, and feet.*

SPECIAL MICRO-NEEDLING COMBO

Two customized Mini Facials when purchasing a Micro-needling Cosmetic series. \$80

Deep Exfoliation Treatments

FOR ROSACEA PRONE and SENSITIVE SKIN

Mandelic Acid Peel (40%); superficial exfoliation; reduces occasional/permanent skin redness, minimizes mild photo aging and mild hyperpigmentation.

1 SESSION \$80 SERIES OF 4 \$272

FOR SUN DAMAGED and AGING SKIN, ADULT ACNE

Pyruvic Acid Peel (50%); provides medium-depth exfoliation; decreases fine lines, wrinkles and mild hyperpigmentation; treats seborrhea.

1 SESSION \$80 SERIES OF 4 \$272

FOR ACNE PRONE and OILY SKIN

Salicylic Peel (30%); medium-depth exfoliation for the face or back; reduces the appearance of lesions from acne, sebum and bacterial colonization.

1 SESSION \$80 SERIES OF 4 \$272

FOR MODERATE/SEVERE SKIN AGING and SCARRING

Trichloroacetic Acid Peel (TCA) (25%) provides medium-depth exfoliation; minimizes sun spots, fine lines and wrinkles, acne and small scars and coarse wrinkles.

1 SESSION \$95 SERIES OF 4 \$323

FOR MODERATE/SEVERE HYPERPIGMENTATION

Jessner Peel blends 20% lactic, 15% salicylic and 14% resorcinol acids; medium-depth exfoliation; reduces moderate to severe hyperpigmentation, improves skin tone, lightens skin.

1 SESSION \$95 SERIES OF 4 \$323

TARGETED FOR AGING SKIN & HYPERPIGMENTATION

Peel blend - Trichloroacetic Acid (TCA) 20%, Lactic Acid 10% and Kojic Acid .5%; medium-depth exfoliation for the hand, arm, face/neck and/or decollete; treats moderate/severe hyperpigmentation and moderate lines and wrinkles.

1 TARGET AREA \$80 PACKAGE OF 4 AREAS \$272

EYES and LIP AREA

Peel blend - Trichloroacetic Acid Peel (TCA) 3.75% and Lactic Acid 15%; exfoliation for mild/moderate photoaging and hyperpigmentation around the orbital and periorbital area.

1 SESSION \$70 SERIES OF 4 \$238

MIX and MATCH

Select any 4 facial exfoliation treatments, including microdermabrasion and/or peels listed above \$300

AD